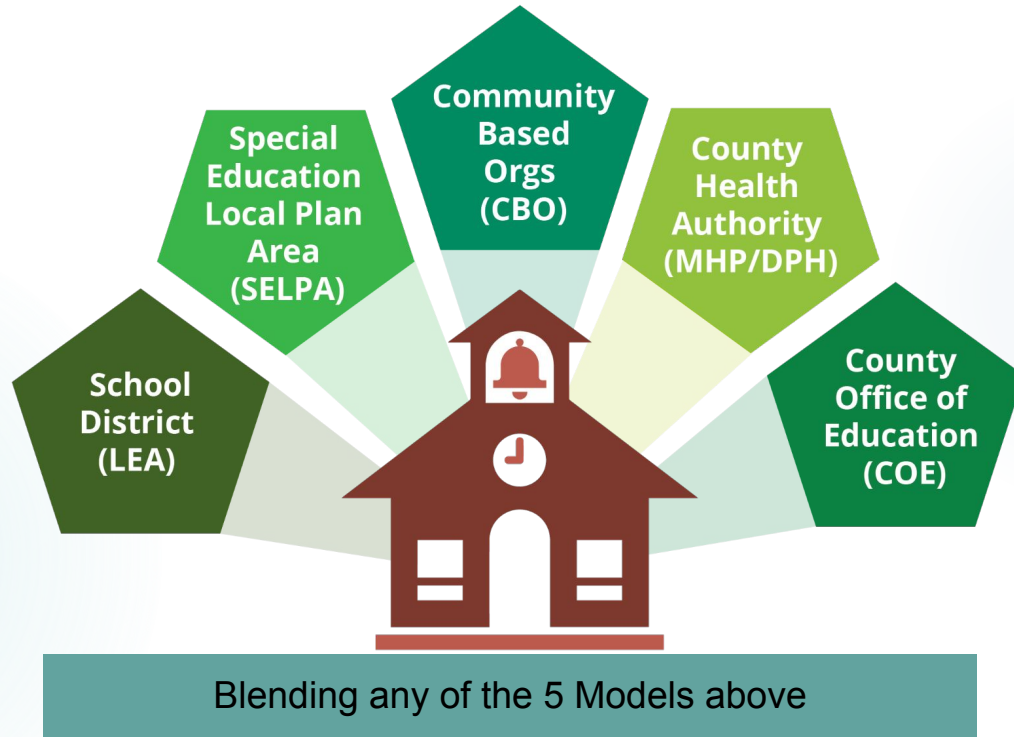


# Models of Billing Connected to Schools



From the Practical Guide for Financing Social, Emotional, Mental Health in Schools:  
<https://cachildrenstrust.org/wp-content/uploads/2020/08/practicalguide.pdf>



# LEA Medi-Cal Billing Option Program

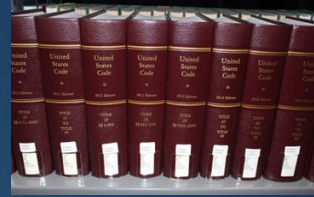
Presented by Patti McIntyre, Leader Services Director, California Medi-Cal Programs

# Questions we will answer today?



- What is the Local Educational Billing Option Program (LEA BOP)?
- Who can participate in the LEA BOP?
- What type of healthcare provider is qualified to participate in the program?
- What types of services are reimbursable?
- What is the process of participating and implementing this program in schools?

# What is the Local Educational Agency Medi-Cal Billing Option Program (LEA BOP)?



- History of the Program
- The LEA BOP was established in 1993, in collaboration with the California Department of Education (CDE), to fund Healthy Start Program.
- The program was authorized under the California's Welfare and Institutions Code  
[California's Welfare and Institutions Code \(WIC\), Division 9 \(Public Social Services\), Part 3 \(Aid and Medical Assistance\), Chapter 7 \(Basic Health Care, Article 4 \(Medi-Cal Benefits Program\), Section 14132.06.](#)
- The LEA BOP is funded with a combination of local and federal Title XIX and XXI funds.

# Who can participate?

LEA's are defined by Department of Health Care Services as a:

- Public School District
- State Special School
- Charter School
- County Office of Education (COE)
- Community Colleges
- Universities



# What types of providers can participate in the LEA BOP?



## Nurse/Health Aides

- Licensed Registered Nurse
- Registered Credentialed School Nurse
- Certified Public Health Nurse
- Certified Nurse Practitioner
- Licensed Vocational Nurse
- Trained Health Care Aide

## Speech-Language Pathologist/Hearing Specialist

- Licensed Speech-language Pathologist
- Credentialed Speech-language Pathologist
- Speech-language Pathology Assistant
- Licensed Audiologist
- Credentialed Audiologist
- Registered School Audiometrist

## Physical & Occupational Therapists

- Licensed physical therapist
- Licensed physical therapist assistant
- Licensed occupational therapist
- Licensed occupational therapy assistant

## Psychologists, Counselors, Social Services

- Licensed psychologist
- Licensed educational psychologist
- Credentialed school psychologist
- Licensed marriage and family therapist
- Associate marriage and family therapist
- Credentialed school counselor
- Licensed clinical social worker
- Credentialed school social worker
- Registered associate clinical social worker

## Other Specialists

- Licensed physician
- Licensed physician assistant
- Licensed optometrist
- Orientation and mobility specialist
- Registered dietician
- Licensed respiratory care practitioner
- Program specialist

# What Types of Services are Reimbursable?



## Assessments

Assessments are performed to determine a student's eligibility for services under the Individuals with Disabilities Education Act (IDEA) or to obtain information about the student to identify and modify the health-related services in the IEP/IFSP. Assessments are defined by the type of assessment being performed, IEP, IFSP or Non-IEP.

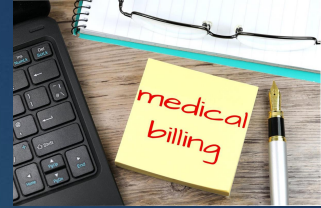
## Treatment Services

Treatment services are considered medically necessary when used to correct or ameliorate defects, physical and mental illness and conditions discovered during a regular (periodic) or inter-periodic screen. Reimbursable treatment services rendered to students must be pursuant to an IEP, IFSP or IHSP.

## Targeted Case Management (TCM)

TCM services assist eligible children to access needed medical, social, educational and other services when TCM is covered by the student's IEP, IFSP, IHSP or other care plan.

# What is the process of participating and implementing this program in schools?



1. Obtain a National Provider Identification (NPI) number
2. Submit the following start-up applications:
  - Provider Participation Agreement
  - Annual Report
  - Data Use Agreement
3. Establish a Collaborative Committee who will assist in decisions for reinvestment of funds.
4. Contract with Local Educational Agency (LEA) or Local Governmental Agency (LGA) to participate in the Random Moment Time Study process.
5. Establish billing process for claim submission

Annually:

Certify that the public funds expended for the LEA services provided are eligible for Federal Financial Participation (CFR, Title 42, Section 433.51).

Reconcile the interim Medi-Cal reimbursement to LEAs with the costs to provide the Medi-Cal services, using a Cost and Reimbursement Comparison Schedule (CRCS).





THANK  
YOU